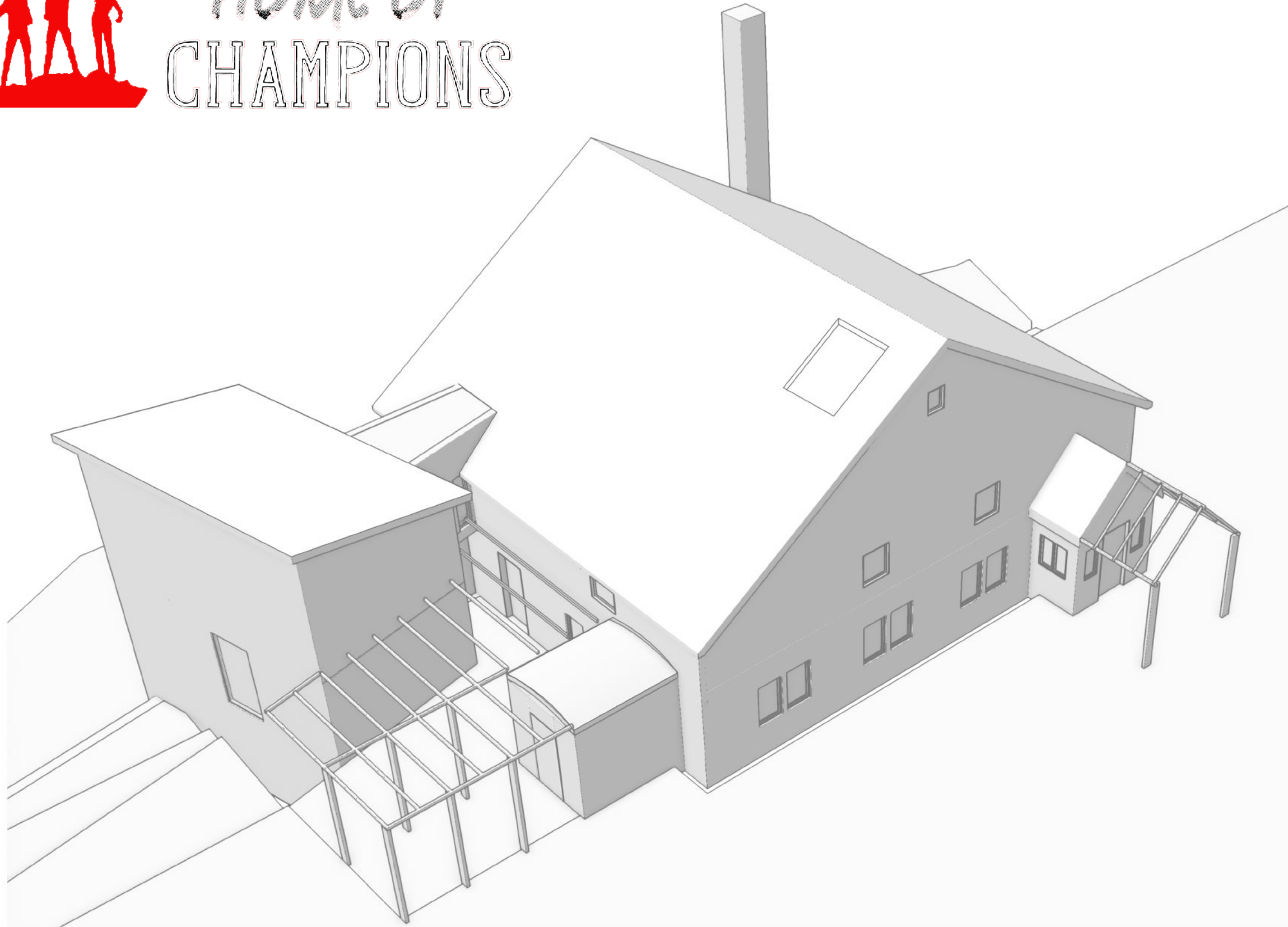




# HOME OF CHAMPIONS



GENTLE FIGHTER  
Patterson  
brought  
class to a  
savage  
sport.



**ANDREW FETHES ARCHITECTS**  
613 ORADELL AVENUE  
ORADELL, NJ 07649  
T 201.261.5510  
F 201.261.5523  
E INFO@AF-ARCH.COM  
W AF-ARCH.COM

DIMITRI CHATZIPETROS DESIGN

147 HIGH AVE, NYACK, NY 10960  
T 347.397.9632  
E dimitri.chatzipetros@gmail.com

PROJECT TITLE

PRELIMINARY DESIGN - GYM BUILDING  
HOUSE OF CHAMPIONS  
NEW PALTZ, NEW YORK

DRAWING TITLE

COVER PAGE

PROJECT ID

20-24012

SCALE

N.T.S.

DATE

08 AUG 2024

DRAWING NO.

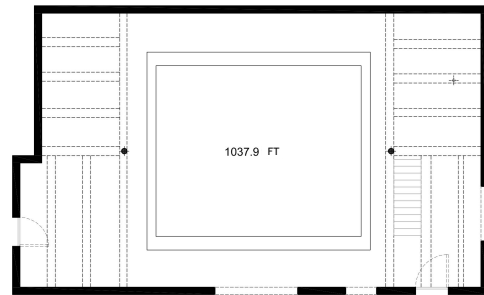
P1



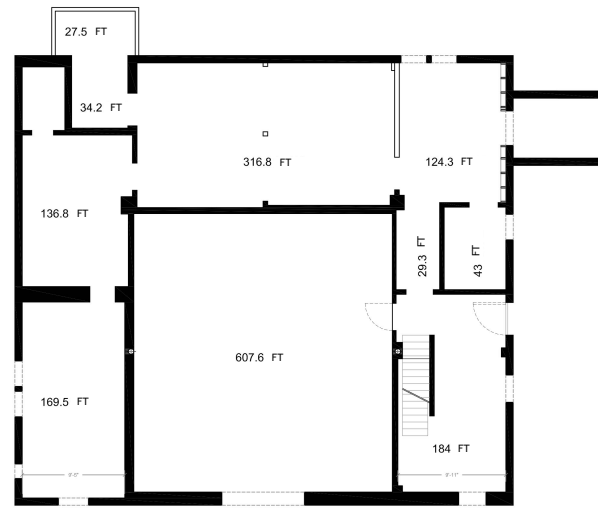
# HOUSE OF CHAMPIONS - AN HISTORICAL AND SYMBOLIC PLACE

FLOYD PATTERSON - A GENTLE CHAMPION, AN EXAMPLE FOR THE NEW GENERATIONS

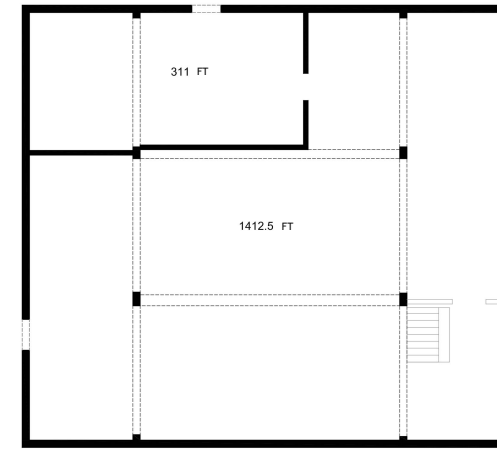
THE EXISTING BUILDING "GYM"



LOWER LEVEL

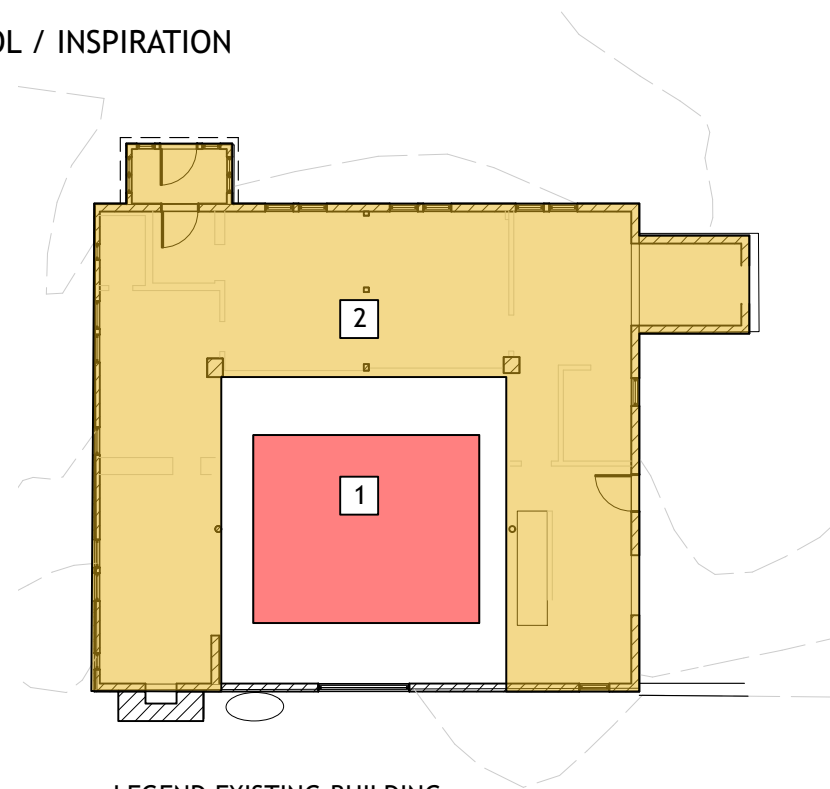
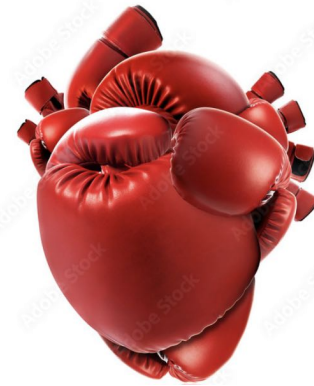


MAIN LEVEL



UPPER LEVEL

THE RING = THE HEART / SYMBOL / INSPIRATION



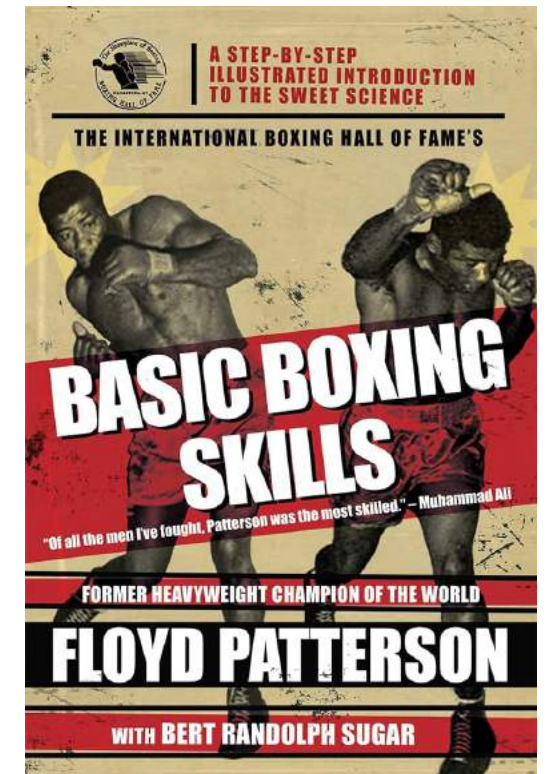
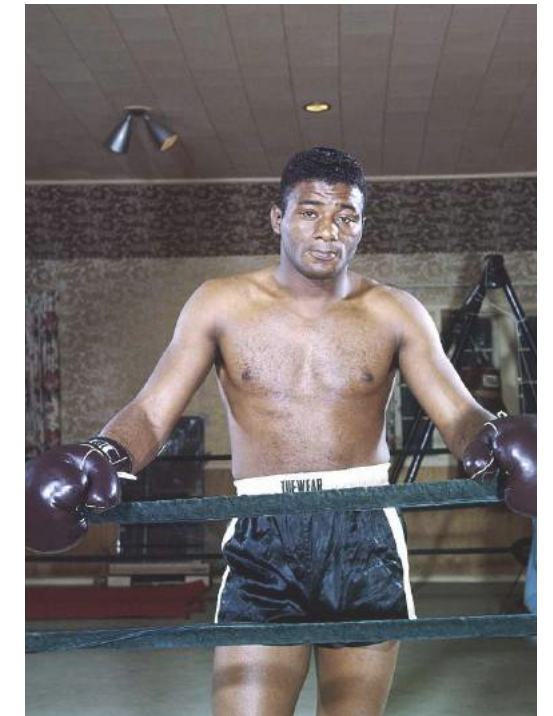
LEGEND EXISTING BUILDING

- 1 THE BOX RING = THE HEARTH / SYMBOL / INSPIRATION
- 2 FLEXIBLE MAIN SPACE

The ring is a void space so rich of meaning and power unto itself that it becomes a "heavy void".

This heavy void at the center of the space is also the main focus of the facility where attention is concentrated and always visually present from every floor of the building.

The design of the facility is inspired by the symbolism of the ring and the heavy void which it occupies.





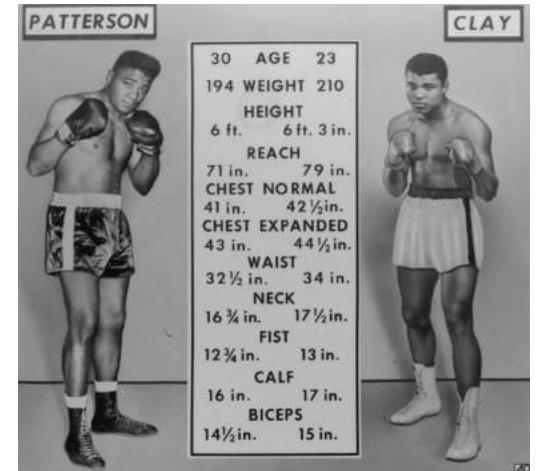


# HOUSE OF CHAMPIONS • NEW PROGRAM vs THE EXISTING BUILDING • LIKE A MATCH

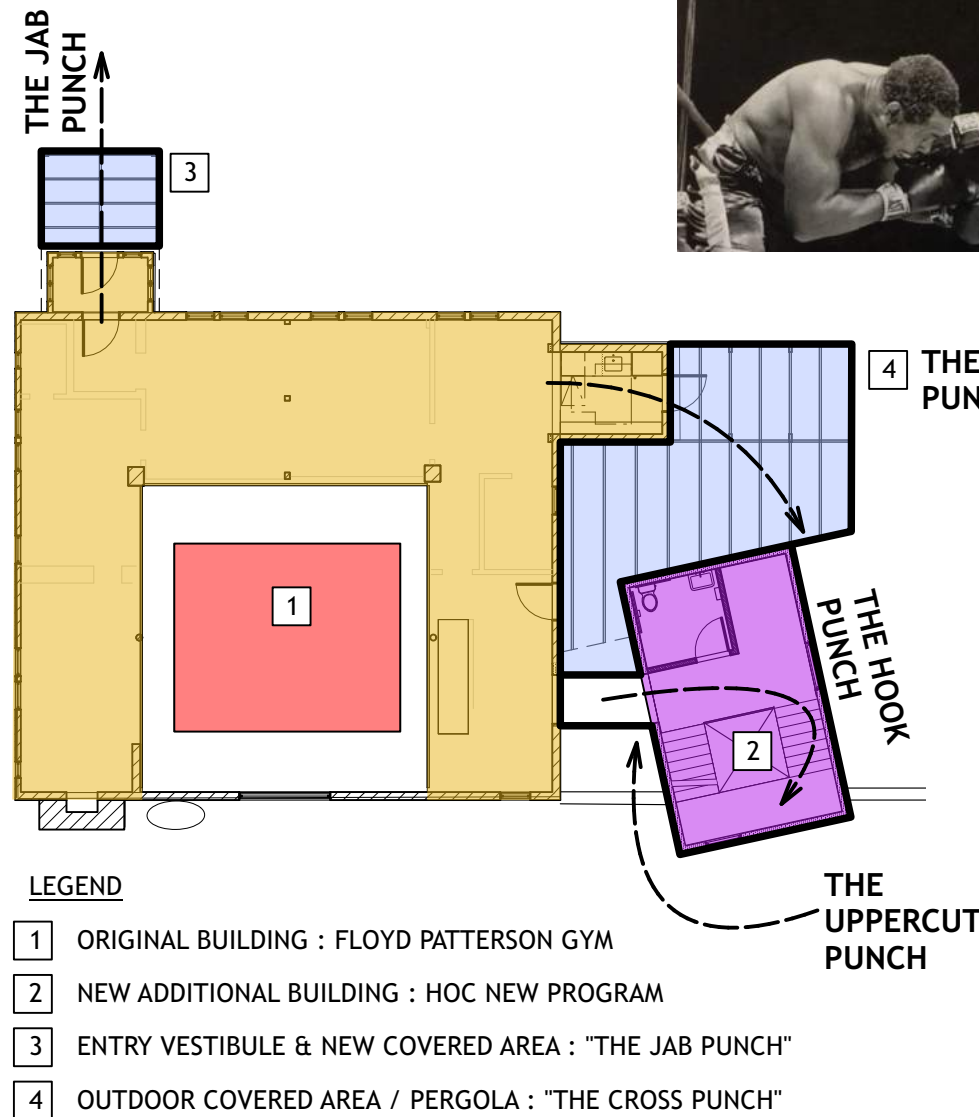
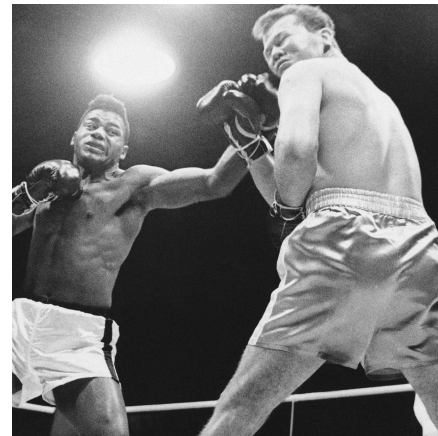
The existing barn structure will remain and all interior partitions will be removed to provide flexible spaces to support programming and events. The remaining interior finishes will be historically restored to maintain the memory of the place, especially the historic boxing ring at the heart of the building. The massive timber frame of the upper level will be showcased.

New program elements for accessibility, vertical circulation, egress, and toilet facilities will be enclosed in a new structure adjacent to the historical gym building. The structures will be connected on each level by unique corridors that reinforce the themes and messages of the program, as well views to the surrounding property and greater environment.

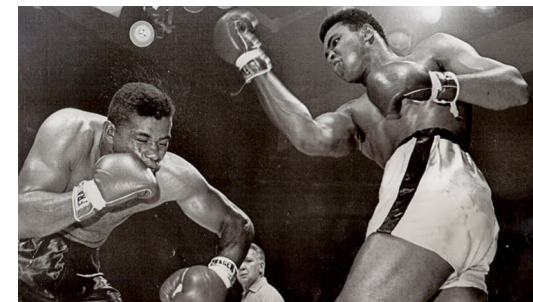
Each building will have a different exterior finish and architectural character, and the non-orthogonal plan configuration sets up a dynamic between the two structures that is reminiscent of a boxing match. The twist of the plan and other architectural features mimic the jabs, hooks, crosses and uppercuts of the fighters, and creates a sense of tension. The space between these "fighters" allows for other program opportunities such as the trellis and outdoor patio that can further support the HOC mission.



"A boxing match is like a cowboy movie. There's got to be good guys and there's got to be bad guys. And that's what people pay for - to see the bad guys get beat."



"The greatest victory is not in never falling, but in rising every time you fall"



GROSS FLOOR AREA TABULATION			
	EXISTING	PROPOSED	TOTAL
LOWER LEVEL	1,260.0 SF	385.0 SF	1,645.0 SF
MAIN LEVEL	1,985.0 SF	370.0 SF	2,355.0 SF
UPPER LEVEL	1,865.0 SF	390.0 SF	2,255.0 SF
	0.0 SF	265.0 SF	265.0 SF
<b>TOTAL</b>	<b>5,110.0 SF</b>	<b>1,410.0 SF</b>	<b>6,520.0 SF</b>

USEABLE FLOOR AREA TABULATION			
	EXISTING	PROPOSED	TOTAL
LOWER LEVEL	1,040.0 SF	335.0 SF	1,375.0 SF
MAIN LEVEL	1,235.0 SF	325.0 SF	1,560.0 SF
UPPER LEVEL	1,755.0 SF	335.0 SF	2,090.0 SF
	0.0 SF	265.0 SF	265.0 SF
<b>TOTAL</b>	<b>4,030.0 SF</b>	<b>1,260.0 SF</b>	<b>5,290.0 SF</b>

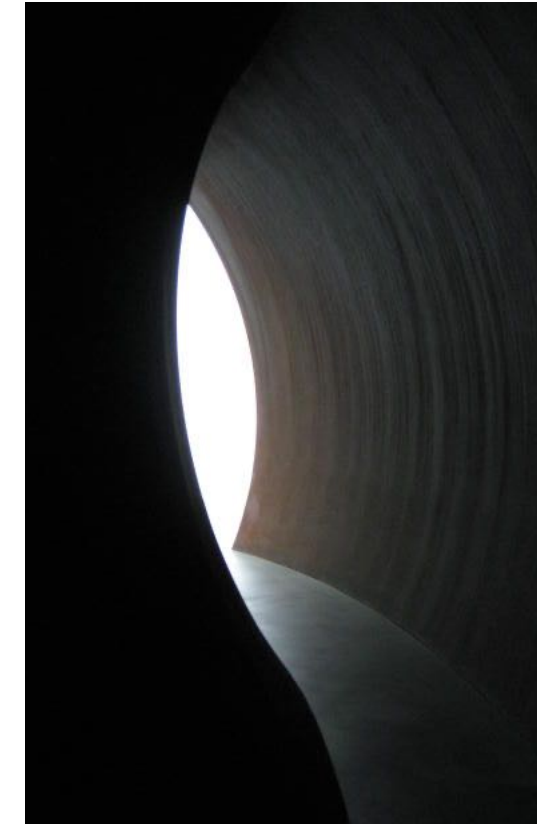
  

OUTDOOR AREA TABULATION			
	EXISTING	PROPOSED	TOTAL
ENTRY PORCH	0.0 SF	100.0 SF	100.0 SF
PATIO & PERGOLA	0.0 SF	400.0 SF	400.0 SF
<b>TOTAL</b>	<b>0.0 SF</b>	<b>500.0 SF</b>	<b>500.0 SF</b>

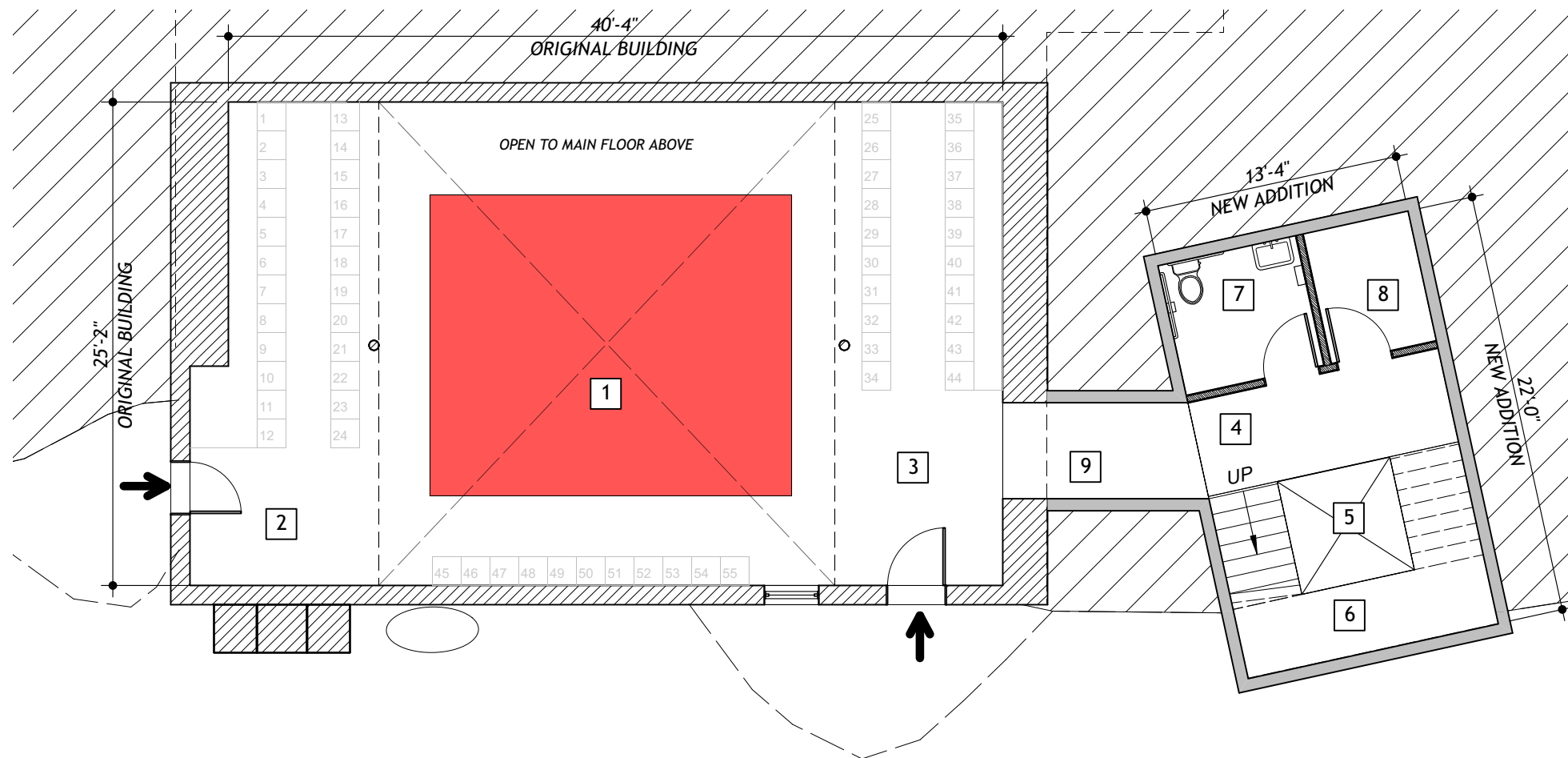


## LOWER LEVEL FLOOR PLAN

The lower level houses the historic boxing ring and flexible space on either side that can be used for viewing activities in the ring, or for other flexible program use. From a fighting space the ring will become a space for new challenges and it will be transformed to a learning stage for the youths served by the HOC.



LOWER LEVEL - ENTERING THE STAGE FROM A DARK TUNNEL TOWARD THE LIGHT



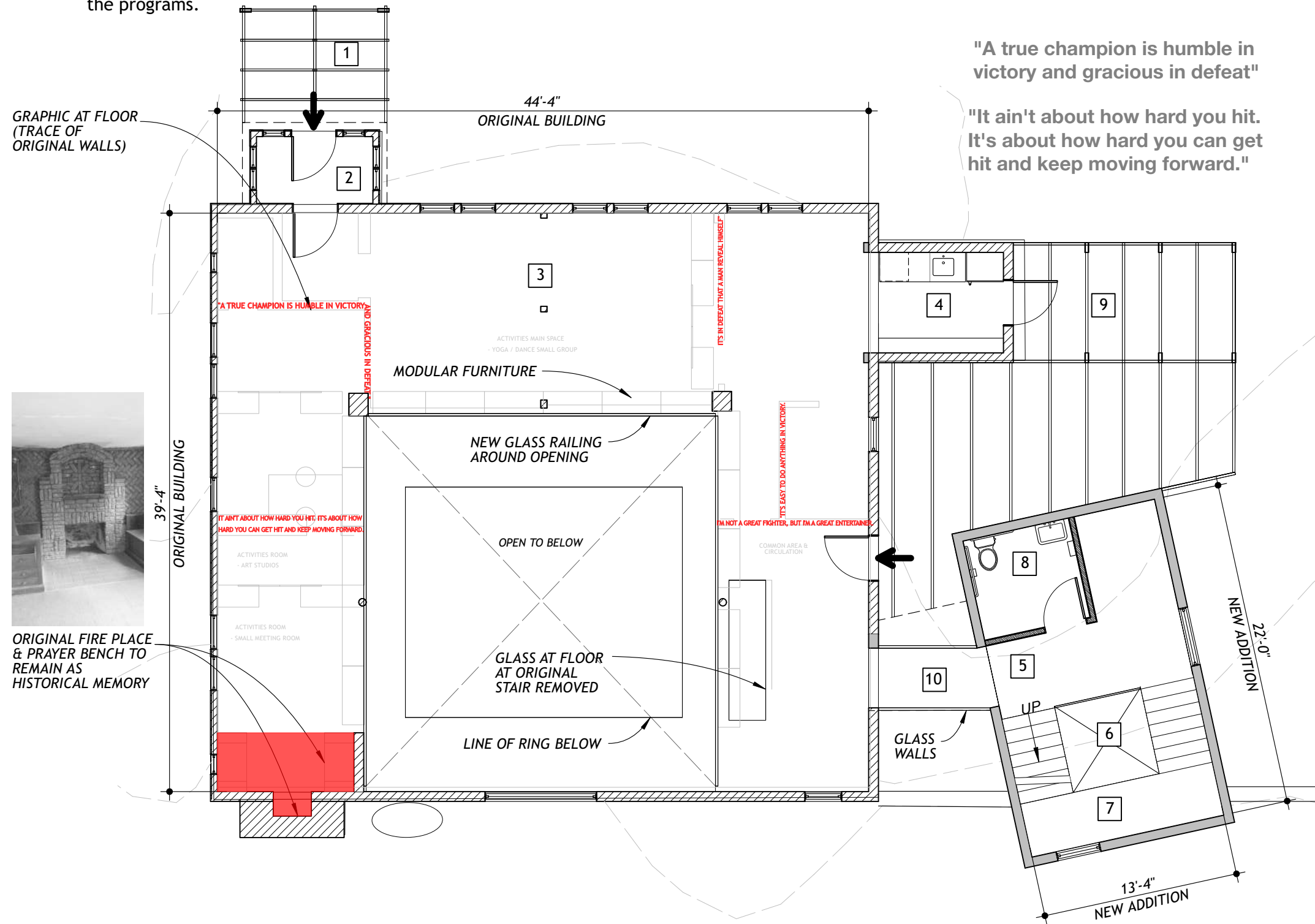
### PROJECT COMPONENTS

- 1 HISTORIC BOXING RING
- 2 ENTRY / SEATING AREA #1
- 3 ENTRY / SEATING AREA #2
- 4 CORRIDOR
- 5 ADA ELEVATOR / LIFT
- 6 STAIRS
- 7 ADA TOILET
- 8 STORAGE / MECHANICAL SYSTEM
- 9 "TUNNEL" CORRIDOR



# MAIN LEVEL FLOOR PLAN

The main level displays the memory and lesson of Floyd Patterson. The former plan will remain in the floorboards and other remnants which will be preserved and restored. The open plan configuration will lend itself to flexible programming, receptions, and other HOC gatherings. The double height area in the center of the plan will be opened to the lower level boxing ring. A small pantry kitchen will be established on this level to serve guest and program participants to support the programs.



"A true champion is humble in victory and gracious in defeat"

"It ain't about how hard you hit. It's about how hard you can get hit and keep moving forward."



MAIN LEVEL - TRANSPARENCY AND VISUAL COMMUNICATION. SOCIAL AND PUBLIC LEVEL

### PROJECT COMPONENTS

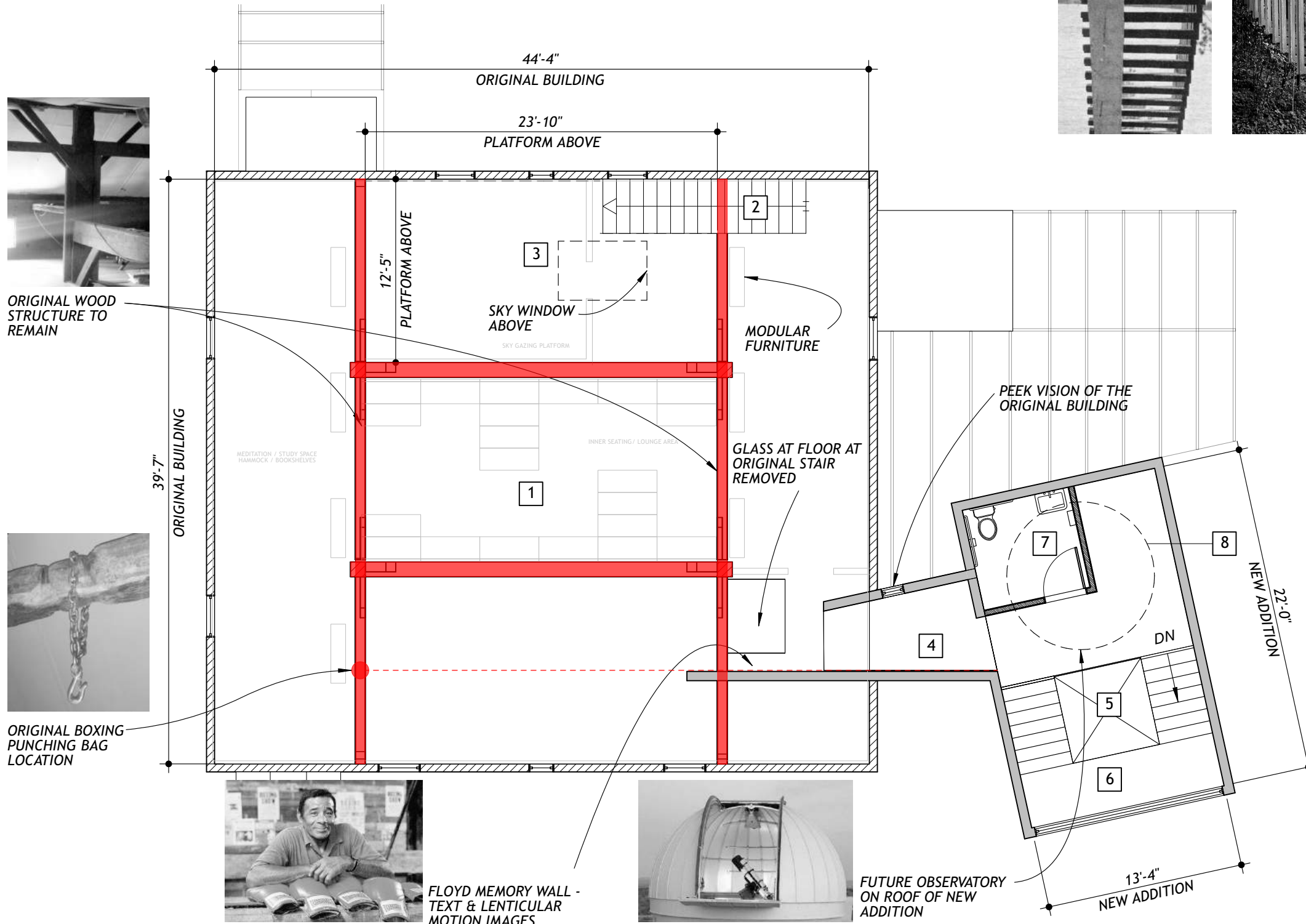
- 1 NEW COVERED ENTRY CANOPY
- 2 VESTIBULE
- 3 FLEXIBLE GATHERING SPACE
- 4 KITCHEN
- 5 CORRIDOR
- 6 ADA ELEVATOR / LIFT
- 7 STAIRS
- 8 ADA TOILET
- 9 OUTDOOR COVERED AREA
- 10 "TRANSPARENCY" CORRIDOR





# UPPER LEVEL FLOOR PLAN

The upper level will remain as an open space for casual learning and other program events. It is a majestic vaulted room that displays the massive timber structure which supports the roof. These timbers will be preserved and showcased as a tribute to Patterson, including the well worn timber that supported his heavy bag. An observatory platform will be constructed and accessed by a new sculptural stair. Sky and stars gazing will be through a new roof windows.



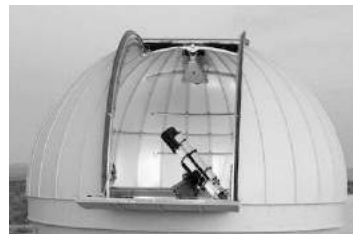
ORIGINAL WOOD STRUCTURE TO REMAIN



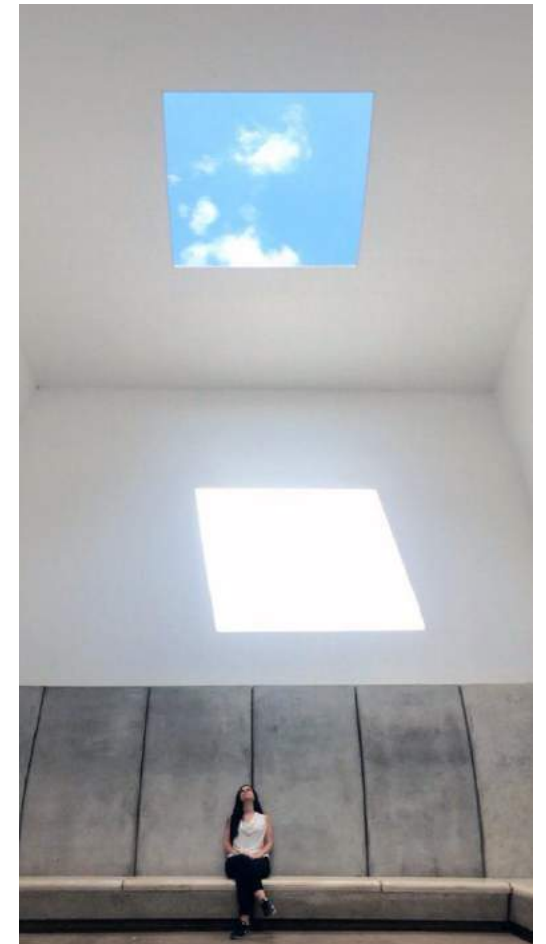
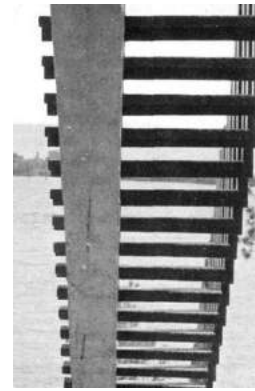
ORIGINAL BOXING PUNCHING BAG LOCATION



FLOYD MEMORY WALL - TEXT & LENTICULAR MOTION IMAGES



FUTURE OBSERVATORY ON ROOF OF NEW ADDITION



UPPER LEVEL - OPENING THE GAZE TO THE STARS

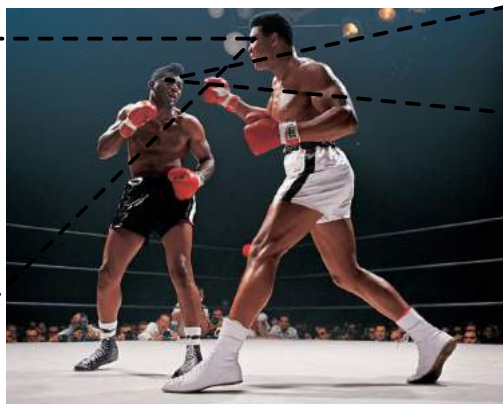
### PROJECT COMPONENTS

- 1 FLEXIBLE GATHERING SPACE
- 2 STAIR TO UPPER PLATFORM
- 3 STARS GAZING PLATFORM
- 4 "ASPIRATION BRIDGE" CORRIDOR
- 5 ADA ELEVATOR / LIFT
- 6 STAIRS
- 7 ADA TOILET
- 8 FUTURE SKY OBSERVATORY



# SCHEMATIC CROSS SECTION THROUGH THE BUILDING

The cross section through the building reinforces the dynamic plan configuration and continues the narrative of two fighters who are in an intense gaze at each other. The configuration of the floors have both natural vistas inside each building and choreographed views at program elements and architectural features that also create interesting visual connections.

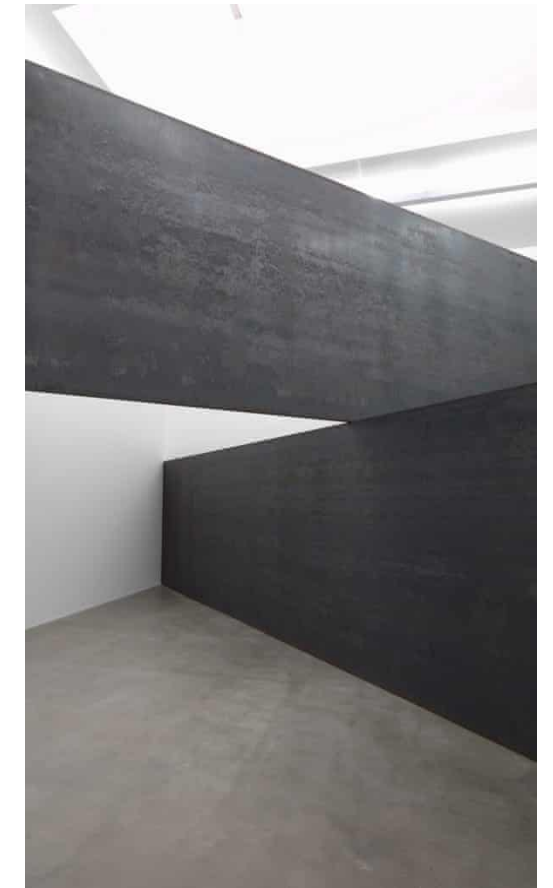
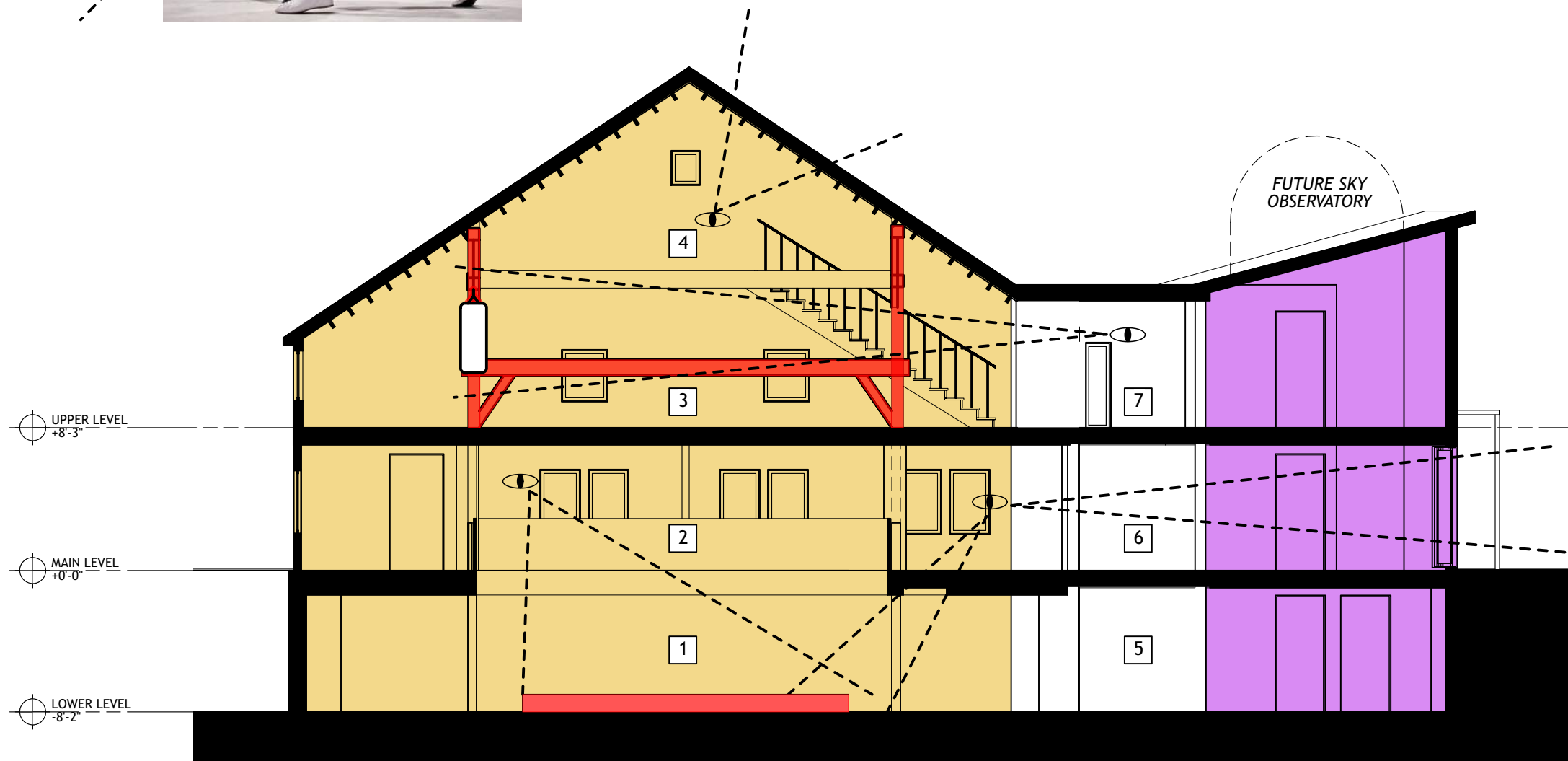


### 3 DIFFERENT LEVELS:

LOWER LEVEL - THE STAGE/RING - FOCUS OF ATTENTION

MAIN LEVEL - THE LEVEL OF INTERACTIONS, SOCIAL AND VISUAL

UPPER LEVEL - THE "WITHIN" LEVEL TO FIND OURSELVES AND PUSH THE LIMIT TO THE SKY



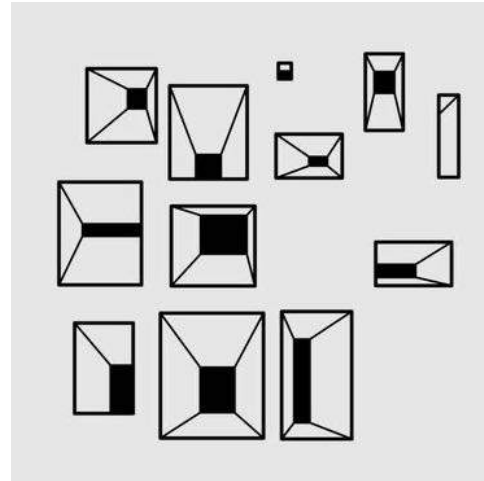
### PROJECT COMPONENT

- 1 LOWER LEVEL - HISTORIC BOXING RING
- 2 MAIN LEVEL - FLEXIBLE GATHERING SPACE
- 3 UPPER LEVEL - REFLECTIVE SPACES
- 4 UPPER LEVEL - SKY WATCHING OBSERVATORY
- 5 "TUNNEL" CORRIDOR
- 6 "TRANSPARENCY" CORRIDOR
- 7 "ASPIRATION BRIDGE" CORRIDOR



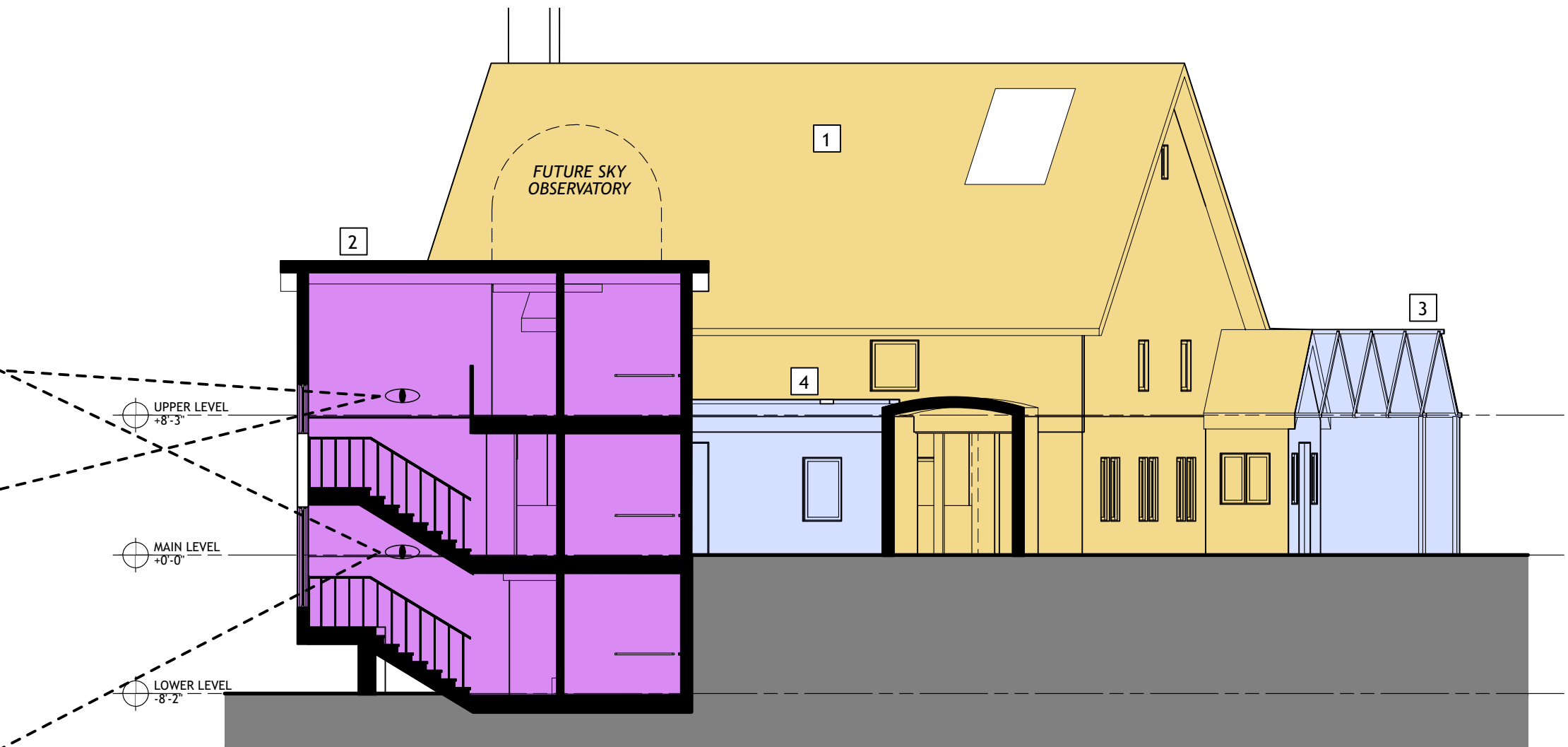
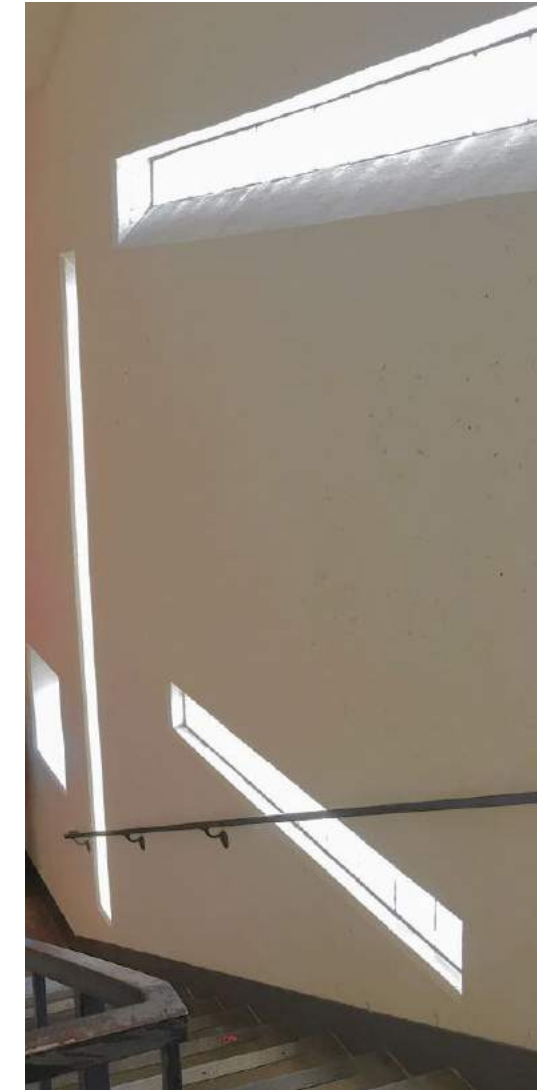
# A STAIR AS AN OCCASION FOR OUTWARD VIEWING and AS AN IDENTITY SIGNPOST

In addition to serving egress and vertical circulation, the stair is also an opportunity to tell a story about looking in multiple directions, to explore different viewpoints, and open the mind for new dialogues.



## A VISUAL SIGN FROM OUTSIDE

The stair building will have a unique cladding to both differentiate itself from the historic barn, and to be seen from the street and provoke the curiosity of travellers who may want to learn more about the property.



### PROJECT COMPONENTS:

- 1 EXISTING BUILDING
- 2 NEW ADDITIONAL BUILDING
- 3 ENTRY VESTIBULE & NEW COVERED AREA
- 4 OUTDOOR COVERED AREA / PERGOLA



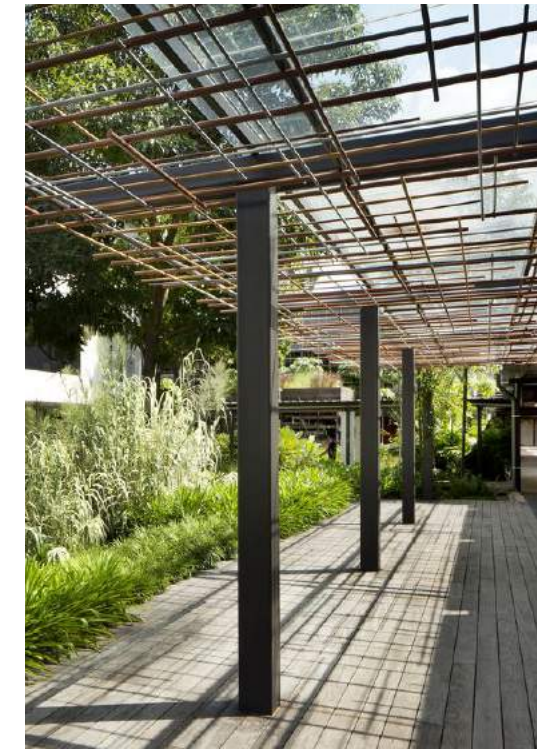
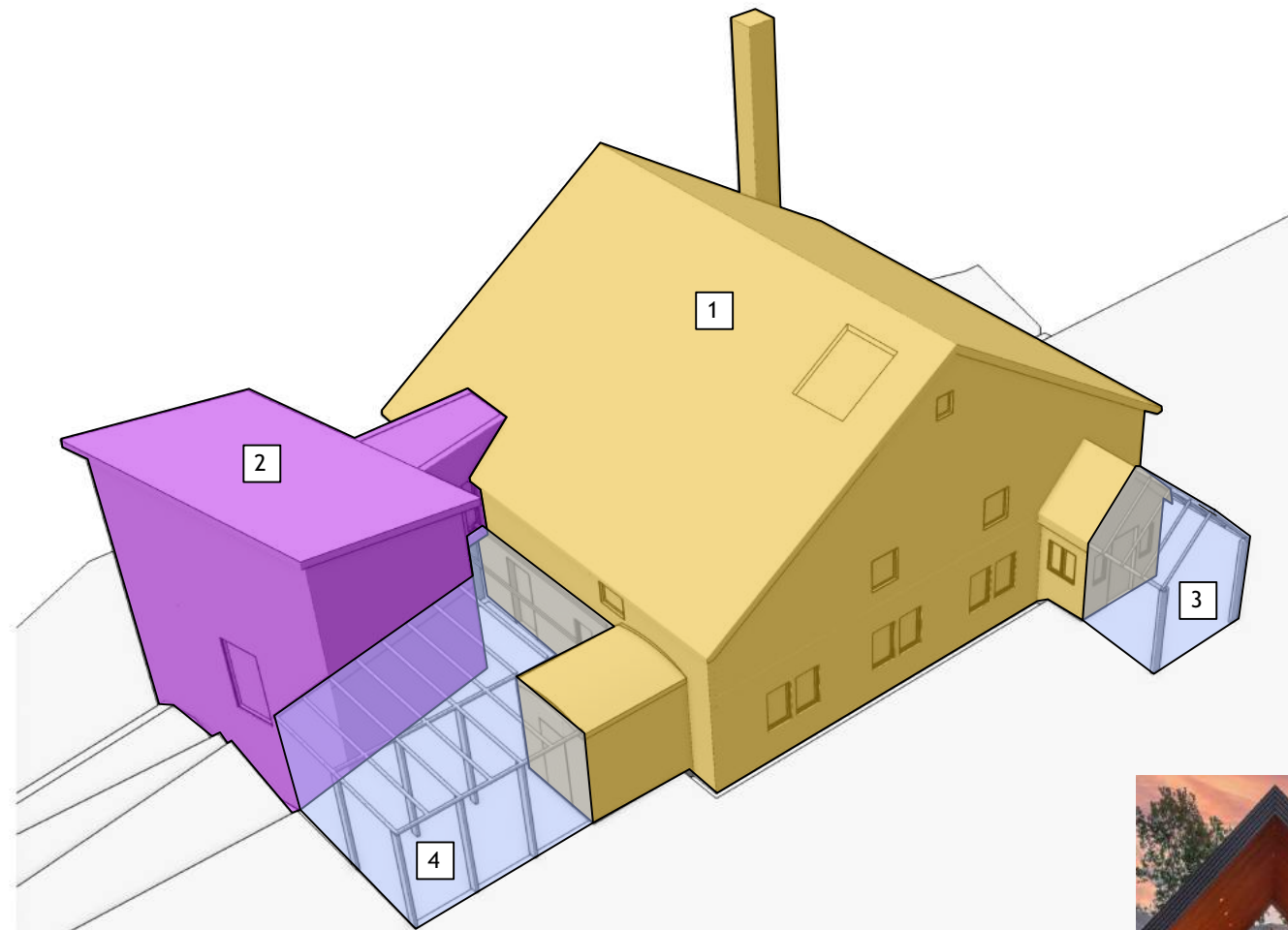


# OUTDOOR SPACES - WELCOMING, INFORMATIVE, GATHERING PLACES IN CONNECTION WITH NATURE

The new outdoor structures are extensions of the building that define the entry points for the main level and a framework for other informative content that can support the HOC mission.

Architecturally these trellises, pergolas, and open metal frame-works are a counterpoint to the solidity of the gym building and addition. Differing material densities and screening will reflect each specific use: to create protection from the weather at the main entry, or an intimate gathering space for dining, meetings, or other HOC activities. The open framework creates dynamic shadow patterns throughout the day, and a direct connection with the natural environment.

These frame-works will also include outdoor signage and exhibition materials to greet visitors and provide information on activities at the center as well as other exhibition content.



METAL LINEAR PATTERNS DEFINE THE SPACE AND GIVE A RHYTHM AND A MEASURE.

### PROJECT COMPONENTS:

- 1 EXISTING BUILDING
- 2 NEW ADDITIONAL BUILDING
- 3 ENTRY VESTIBULE & NEW COVERED AREA
- 4 OUTDOOR COVERED AREA / PERGOLA